



SHAPING THE FUTURE

Offsite Manufacturing

SHAPING THE FUTURE

Offsite Manufacturing

CONTENTS

Welcome to Prism

Great reasons to consider offsite

Product range

Sustainable & responsible business

Success stories

Find us

WELCOME...

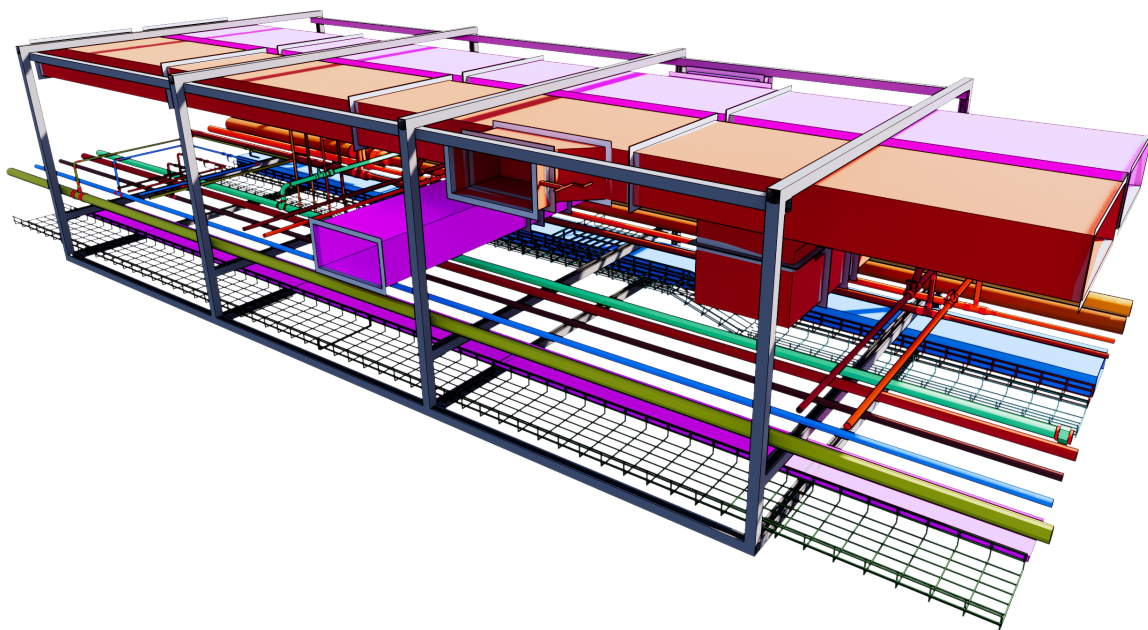
..to the future of construction, offsite manufacturing.

Our award-winning offsite manufacturing facility, Prism, is based in the heart of the Midlands, servicing MEP projects across diverse sectors including energy, residential, commercial, high-tech and education.

Prism produces quality prefabricated products in a safe, controlled environment, ready to be efficiently installed on site.

The improved safety, lower risk, shorter programmes and greater efficiencies offered by offsite manufacture enable modern methods of construction that delivers certainties on resource, time and quality for our customers. The final result?

A REDUCED CARBON FOOTPRINT, A MORE EFFICIENT DELIVERY PROGRAMME AND GREATER COST CONTROL.



GREAT REASONS TO CONSIDER OFFSITE

ADVANCES IN MANUFACTURING ALLOW US TO PREFABRICATE AND PREASSEMBLE 80% OF ALL M&E OFFSITE.

The evolution of the construction industry and Government initiatives demand that buildings are delivered more economically, more cost effectively, more safely and more sustainably within shorter programme periods and with reduced impact to our environment.

Success is assured through collaborative and integrated working, a ‘can do’ culture and attitude, technical expertise, innovation and technology. Our award-winning offsite manufacturing facility Prism directly aligns with this approach.

improved SAFETY	IMPROVED QUALITY	LOWER ENVIRONMENTAL IMPACT
FASTER INSTALLATIONS	ELIMINATION OF SERVICE CLASHES	BUDGET CONTROL
INNOVATE & BESPOKE SOLUTIONS	FEWER DELIVERIES TO SITE	MINIMIZED DISRUPTION & REDUCED CARBON EMISSIONS
PRODUCTION COMMENCES IN TANDEM WITH CONSTRUCTION	REDUCED SITE HOURS	ONSITE STORAGE REDUCTIONS
REDUCED PROGRAMME	WEATHERPROOF manufacture & assembly	REDUCTION IN ACCESS SYSTEMS

A LITTLE BIT ABOUT US

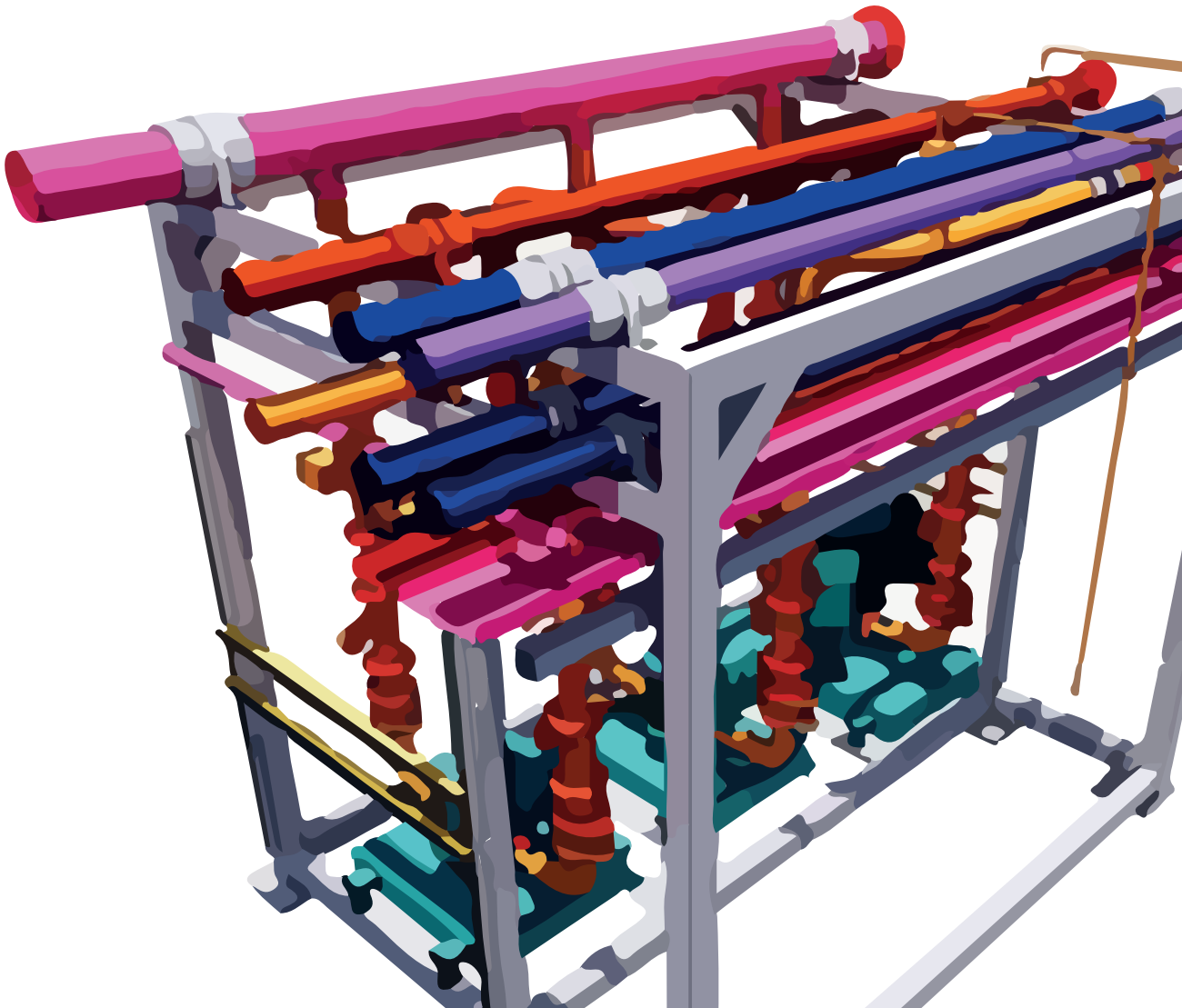
PRISM OFFSITE MANUFACTURING IS A HIGHLY ACCLAIMED SPECIALIST BUSINESS THAT PROVIDES A WIDE RANGE OF OFFSITE PRODUCTS TO SUPPORT MEP INSTALLATIONS ON PROJECTS.

Established in 2007, Prism is part of SES Engineering Services, owned by the Wates Group, and we are proud to share a strong engineering heritage coupled with an enviable construction expertise.

Underpinning our commitment to quality and innovation in offsite technology is the continued acknowledgement of our product excellence by our industry peers.

FOR THE LAST FOUR YEARS PRISM OFFSITE MANUFACTURING HAS RECEIVED THE AWARD FOR THE “BEST USE OF MEP & POD TECHNOLOGY” AT THE OFFSITE AWARDS.

The foundation for this success is our robust and accredited quality procedures verified annually by BM Trada. Sustainability is at the very core of our business culture and accordingly we have secured FSC accreditation for all timber elements in our products.



PRODUCTS & SOLUTIONS

THROUGH A COLLABORATIVE APPROACH WITH OUR CUSTOMERS, WE DEVELOP FORWARD-THINKING SOLUTIONS TO OVERCOME COMPLEX CHALLENGES THAT EXIST IN THE CONSTRUCTION INDUSTRY AND ON SITES.

We recognise that every project is unique in its design and will differ from sector to sector. We have vast experience in developing and manufacturing highly complex products so we will ensure your projects and customers are fully satisfied with our delivery.

There are no barriers to the use of offsite products and they can be incorporated across all sectors within the construction industry, including commercial, industrial, high tech, education and leisure. Use is not limited to new build projects and with thoughtful engineering and logistical consideration offsite products can be utilised and provide the same benefits on refurbishment projects.



BESPOKE SOLUTIONS

We manufacture bespoke solutions to suit specific customer requirements across different sectors; from large scale 'Big Prefab' industrial modules to innovative curved and faceted shapes to integrated fabric products, SES can customise solutions to create improved safety, efficiency, productivity and quality.



MODULES

These are available in 2D, 2D hybrid or 3D versions depending on the level of services to be incorporated. The standard length of a module is 6 metres long x 1.5 metres wide. The services usually incorporated are: LTHW, CHW and domestic pipework and electrical containment, however, ductwork and firefighting systems should be considered if they are in the same location as the other building service distribution.



UTILITY CUPBOARDS

These are available in a 2D and 3D version depending on the level of building services to be incorporated and are generally used in high rise apartments and student accommodation. They are designed and sized to include the following mechanical, electrical plant and associated services: HIU's, CIU's, MHVR's, underfloor heating, radiator circuit manifolds and electrical distribution boards/ consumer units.

The utility cupboards are also designed to incorporate a washing machine complete with the relevant services.



PLANT SKIDS

These skids are available in all sizes and shapes to suit the building requirements. They usually consist of mechanical plant such as pumps, boilers, plate heat exchangers and include the associated pipework services and ancillaries.



PACKAGED PLANTROOMS

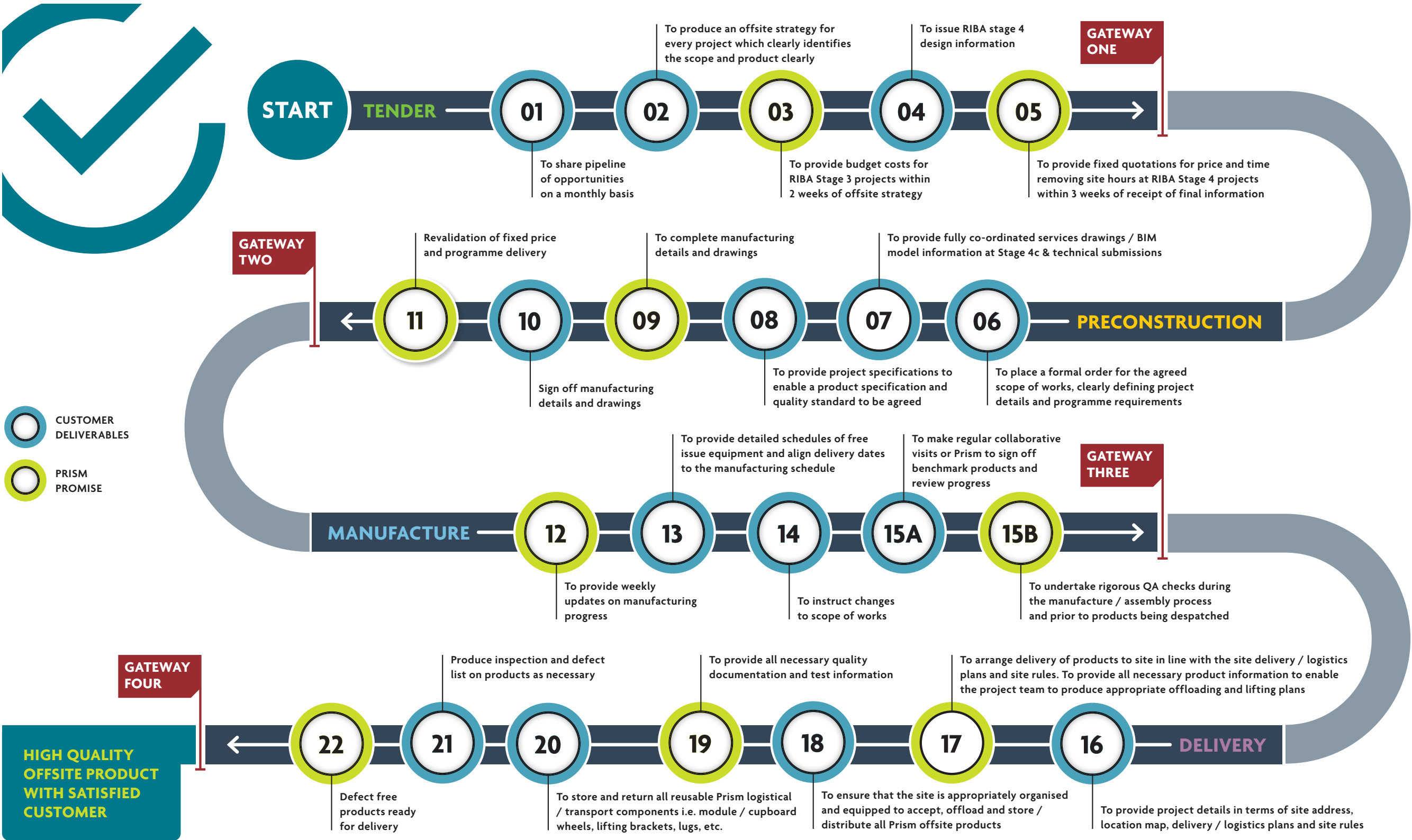
These enclosures are designed to incorporate all the building service plant that you would normally find in a plantroom along with the associated heating, cooling, domestic services pipework, electrical services and building management services. They will be designed, sized and broken down into sections that can be delivered on a standard artic lorry, without an escort vehicle, to its final location to be then reassembled on site.



RISERS

These are available in 2D or 3D versions depending on the level of services to be incorporated. The standard length of a riser frame is based on a length of an artic lorry which is approximately 13M. This allows the risers frame/section to span 3 floors of most buildings and recommend that integrated riser floors are provided, improving safety and build efficiency on site. We recommend floors to the risers on the 3D versions. Services usually incorporated are: LTHW, CHW, domestic pipework and electrical containment including busbar systems.

THE PRISM PROMISE



DELIVERING TOTAL QUALITY & SAFETY

WE FULLY EMBRACE DESIGN FOR MANUFACTURE (DFM), DESIGN FOR ASSEMBLY (DFA) AND DIGITAL ENGINEERING AND ALL WE DO IS UNDERPINNED BY OUR “ZERO HARM – WE’RE SAFER TOGETHER” INITIATIVE AND QUALITY STANDARDS.

PRISM DELIVERS BESPOKE PRODUCTS THAT COMBINE MECHANICAL, ELECTRICAL AND SPECIALIST SERVICES. BECAUSE WE MANUFACTURE OUR PRODUCTS OFFSITE, WE SIGNIFICANTLY CONTRIBUTE TO IMPROVING YOUR SITE SAFETY AND PERFORMANCE. WE HELP REDUCE RISK, PROVIDE PROGRAMME CERTAINTY AND MINIMISE IMPACT TO THE ENVIRONMENT.



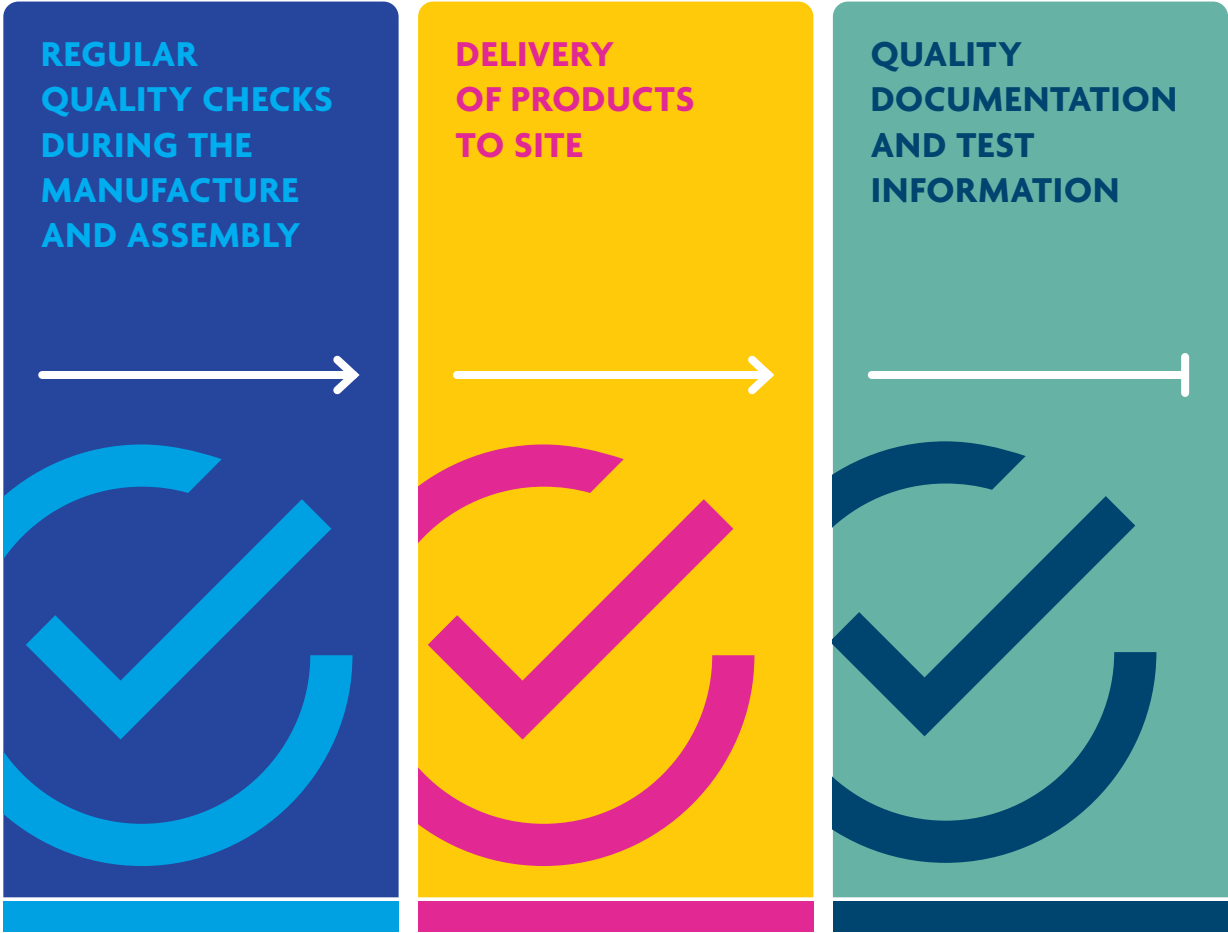
Work carried out on projects is seamlessly transferred into the Prism workflow. These products are developed in a digital environment removing re-work both in the factory and on-site, contributing to improved productivity and overall efficiency. The high-quality standards we achieve align with our own bespoke Smart Landings principles process from tender through to construction, manufacturing through to handover.

Prism products deliver the highest quality by taking the intricate site installation of MEP services into a controlled factory environment. This guarantees that products are manufactured in safe, well-lit, dry conditions. The work is carried out on production lines by assembly operatives who are highly trained on specific products and our internal quality procedures captured in the Prism Operating Framework which assists in managing the whole project life cycle.

We adopt this approach from concept through to delivery to ensure we achieve compliance on every product. Our facility is regularly audited to ISO:9001, ISO:14001 and ISO:18001 standards.

The fundamentals of the 6S approach to lean manufacturing is embedded in all we do on the factory floor. All our managers and operatives are trained in lean manufacturing techniques and explore continuous improvement of our assembly methods.

Nothing is more important to us than the safety of our people, our customers and all stakeholders. We operate a no compromise approach and our record is industry-leading. Following the introduction of our “Zero Harm – We’re Safer Together” initiative in 2016 we have aimed to achieve our goal by continuous improvement both in our work practices and product development.





SUSTAINABLE & RESPONSIBLE BUSINESS



THE CURRENT CLIMATE EMERGENCY PRESENTS US ALL WITH NEW CHALLENGES IN HOW WE DELIVER OUR PROJECTS AND AWARENESS OF OUR IMPACT ON THE ENVIRONMENT.

Through the work carried out at Prism, we significantly limit our impact - we focus on key issues and aim to protect the environment through the following priorities:

- Pollution prevention
- Reducing carbon emissions and waste
- Sourcing responsibly
- Using water efficiently

By using products manufactured and assembled at Prism we consistently remove more than 120,000 hours of work offsite.

Our company has committed to three bold targets to help ensure we deliver 'zero harm' to the environment:

- Zero waste from our operations by 2025 – we aim to reduce and then eliminate the production of all waste created from on-site operations.
- Zero carbon from our operations and operational vehicles by 2025 – we aim to reduce carbon emissions from Scope 1 and 2 operations and to become carbon neutral.
- Positive impact on nature from all operations – we aim to enhance the natural environment wherever it operates and to increase the value and community benefit of natural environments.

SUCCESS STORIES



PRODUCT: **PACKAGED PLANTROOM**

PROJECT: **WHITEHAVEN ACADEMY**

LOCATION: **CUMBRIA**

All the building services including the BMS and fire protection were installed in the factory, removed over 2,000 man hours from the site works and ensured the project was handed over on time.



PRODUCT: **RISERS**

PROJECT: **LILLIE SQUARE**

LOCATION: **LONDON**

Four identical risers serving the high-rise apartment block in London, provided the ideal solution to bring the programme back on track, removed over 9,000 man hours from the site works and incorporated the fire strategy into the risers.



PRODUCT: **MODULES**

PROJECT: **WELLINGTON PLACE 7 & 8**

LOCATION: **LEEDS**

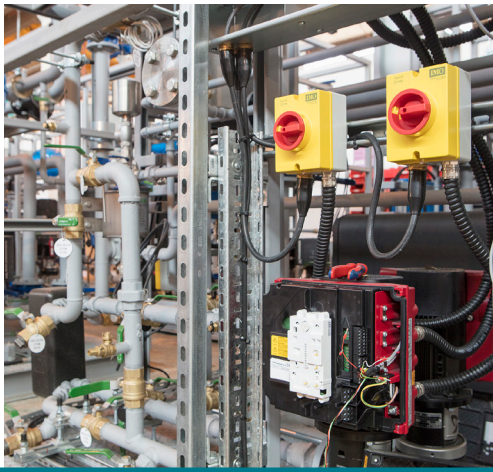
Through early engagement with the customer we were able to engineer standardised, repeatable solutions to maximise the offsite opportunities creating over 650 multi-service modules removing 5,120 hours from site.

PRODUCT: **SKIDS**

PROJECT: **ONE BANK STREET**

LOCATION: **LONDON**

Technically challenging project for Prism, reporting 99.9% compliance on over 10,000 joints produced from 57 plate heat exchange plant skids, over 12,000 labour hours were removed from the site works.

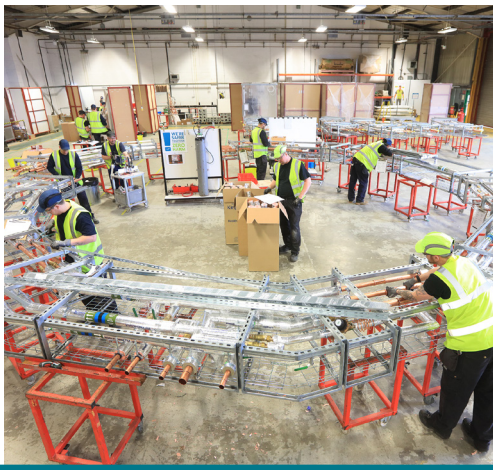


PRODUCT: **CURVED MODULES**

PROJECT: **GASHOLDERS LONDON**

LOCATION: **LONDON**

The complex building services distribution at each level of each building was resolved by the use of curved modules removing 8,400 labour hours from the site works.



PRODUCT: **UTILITY CUPBOARDS**

PROJECT: **WOOD WHARF**

LOCATION: **LONDON**

515 utility cupboard modules were delivered over a 10 month period to a very complex install programme and removed 11,000 man hours from the site works.



FIND US

WE COMBINE DESIGN, MANUFACTURING AND SUSTAINABLE PRODUCTS TO SHAPE THE FUTURE OF OFFSITE PRODUCTION.

Strategically positioned, Prism Offsite Manufacturing and Training Facility is located in Coventry, West Midlands and comprises 62,000 sq ft of factory space and 6,500 sq ft of offices/meeting rooms.

The manufacturing area is set up to create a safer and more efficient space for the 10-tonne overhead crane and two independent remotely operated beams to effortlessly install and assemble pipes, pumps, plant equipment, large frames including plantrooms and riser sections.

We welcome all visitors to Prism where we have a number of meeting/ training rooms to accommodate all requirements. A bespoke area for IEE Electrical/Safe Systems of Work training incorporating “live” system equipment is also available.



CONTACT US

2300 Coventry Business Park
Dolomite Avenue
Coventry CV5 6US
prism1@ses-ltd.co.uk
02475 098 264
ses-ltd.co.uk



2300 Coventry Business Park
Dolomite Avenue
Coventry CV5 6US

02475 098 264
ses-ltd.co.uk

CREATING TOMORROW TOGETHER

CL0881